



SPICER®

Off-Highway Products

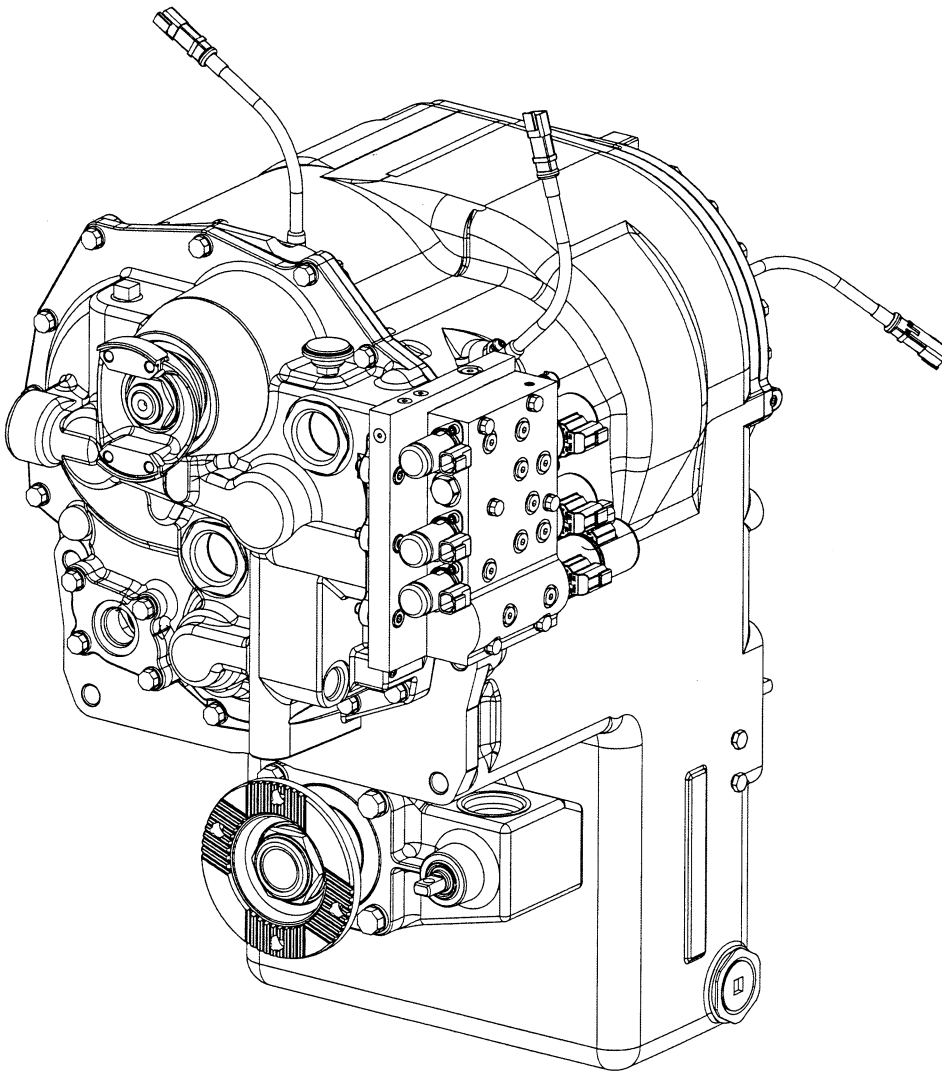
Service Parts List

Transmission
RTE15822-15
4265688

TPL-1919
February 2014

TE15

ASSY-TRANSMISSION



Date : 18-SEP-13
Revised :
MODEL : 4265688

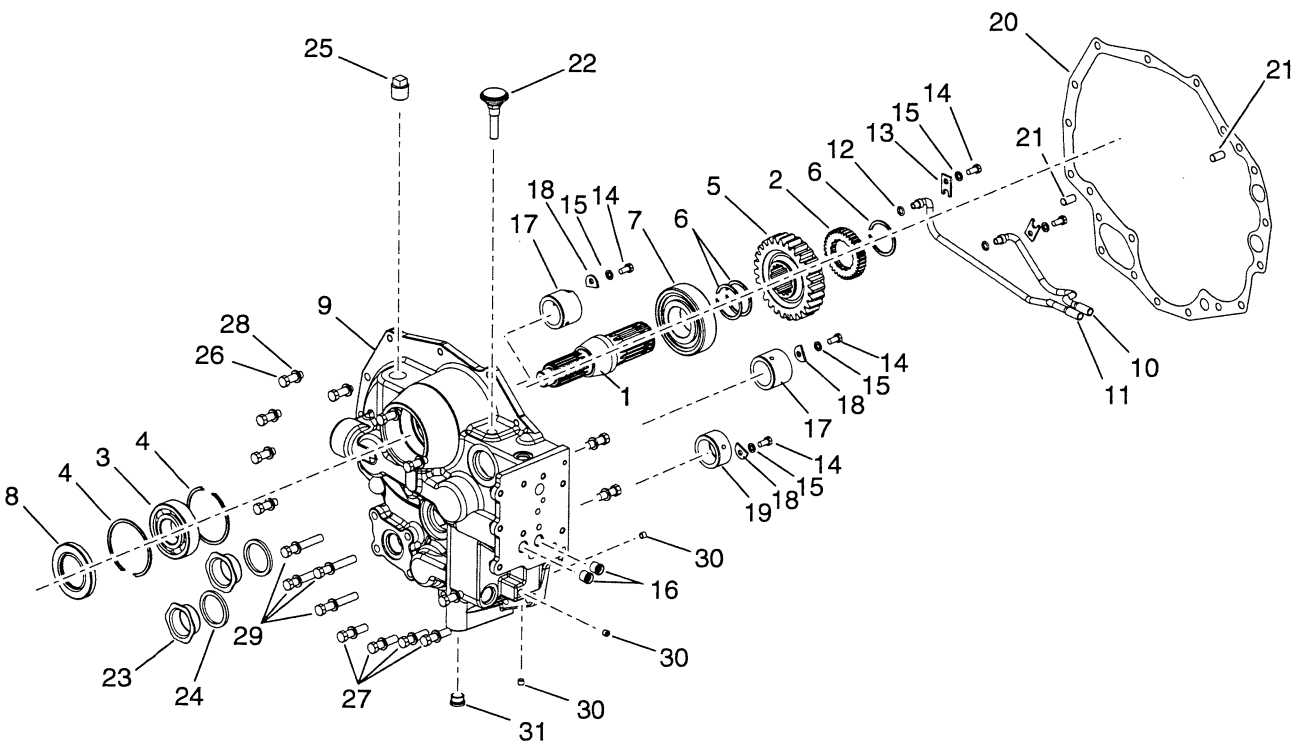
RTE15822-15
ASSY-TE15 TRANSMISSION FOR KALMAR

<u>Item</u>	<u>Qty</u>	<u>Part Number</u>	<u>%</u>	<u>Description</u>
-------------	------------	--------------------	----------	--------------------

N.S.S. - Not Sold Separately
N.I. - Not Illustrated
% - Part Stock Recommendation

TE15

GROUP-INPUT SHAFT AND FRONT COVER



Date : 01-FEB-13
Revised :
MODEL : 4504671

TE15
GROUP-INPUT SHAFT FRONT COVER

<u>Item</u>	<u>Qty</u>	<u>Part Number</u>	<u>%</u>	<u>Description</u>
1	1	4212104	E	SHAFT-INPUT
2	1	4212105		EXCITER RING-TURBINE SHAFT 36T
3	1	247348	C	BEARING-BALL
4	2	223901	D	RING-INPUT SHAFT FRONT BEARING RETAINING
5	1	248198	D	GEAR-TURBINE SHAFT 27T
6	3	224026	D	SNAP RING-GEAR
7	1	241684	C	BEARING-INPUT SHAFT REAR MU-1310-TM
8	1	231798	B	SEAL-INPUT FLANGE OIL
9	1	4212106	E	ASSY-FRONT COVER & TUBE-INCL.ITEMS 10 THRU 19
10	1	231628		ASSY-REVERSE SPEED TUBE-PART OF ITEM 9
11	1	231629		ASSY-3RD SPEED TUBE - PART OF ITEM 9
12	2	25K30012	B	O RING - PART OF ITEM 9
13	2	231048		TUBE CLIP - PART OF ITEM 9
14	5	1C510		CAPSCREW - PART OF ITEM 9
15	5	4E5	E	LOCKWASHER - PART OF ITEM 9
16	2	222067	E	SLEEVE-PRESS & LUBR TUBE- PART OF ITEM 9
17	2	237576	D	SLEEVE-CONVERTER HOUSING-PART OF ITEM 9
18	3	230851		WASHER - PART OF ITEM 9
19	1	232346	D	PISTON RING RACE - PART OF ITEM 9
20	1	231606	B	GASKET-FRONT COVER
21	2	214295	C	PIN-FRONT COVER DOWEL
22	1	4212052	D	AIR-BREATHER
23	2	219370		PLUG-FRONT COVER ACCESS HOLES
24	2	219373	B	GASKET-RUBBER
25	1	10F16		PLUG-PIPE OIL FILTER HOLE

N.S.S. - Not Sold Separately
N.I. - Not Illustrated
% - Part Stock Recommendation

Date : 01-FEB-13
Revised :
MODEL : 4504671

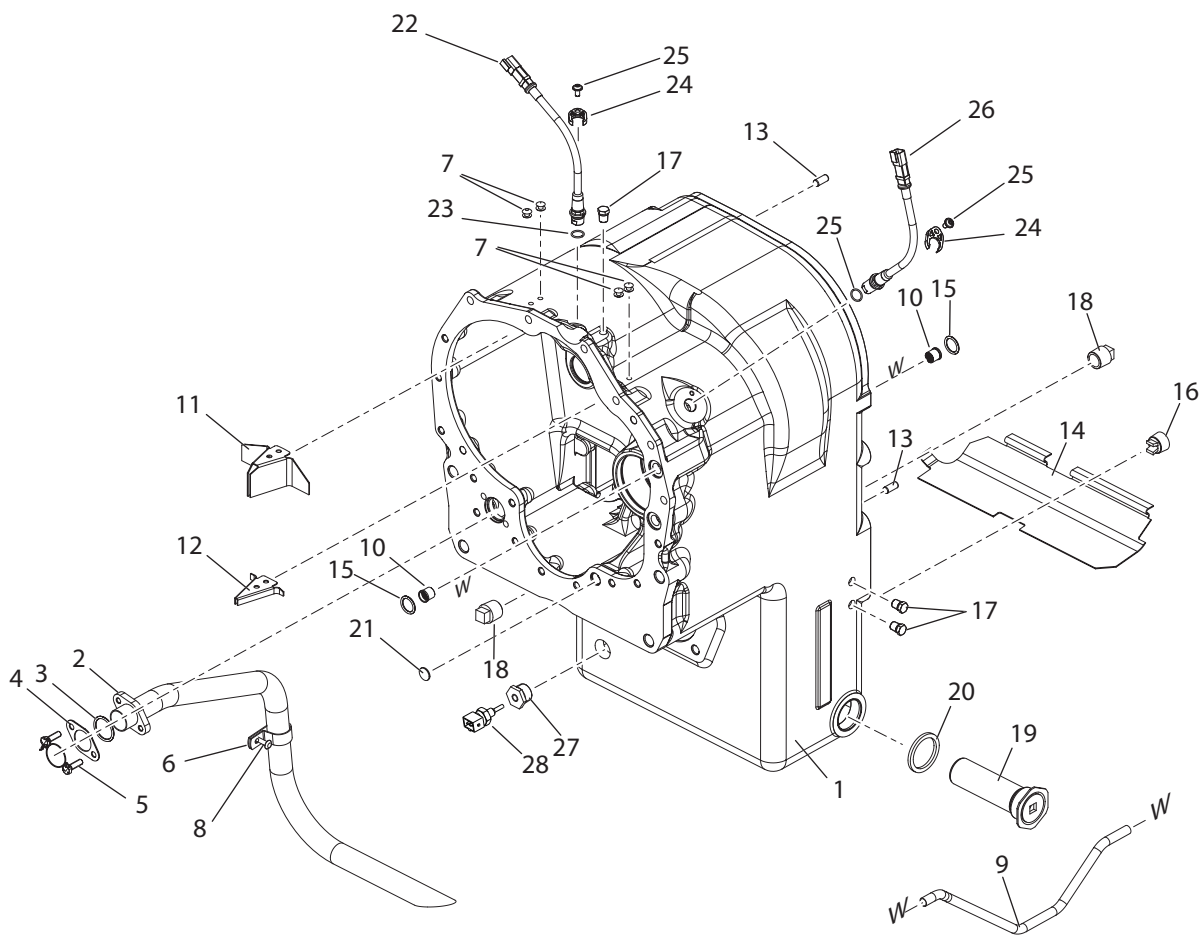
TE15
GROUP-INPUT SHAFT FRONT COVER

<u>Item</u>	<u>Qty</u>	<u>Part Number</u>	<u>%</u>	<u>Description</u>
26	10	17C720		SCREW-FRONT COVER TO TRANSMISSION CASE
27	4	17C728		SCREW-FRONT COVER TO TRANSMISSION CASE
28	18	4E7		LOCKWASHER-FRONT COVER TO CASE SCREW
29	4	17C744		SCREW-FRONT COVER TO TRANSMISSION CASE
30	3	16F2		PLUG-PIPE
31	1	47K6		PLUG-LUBE SYSTEM CONST

N.S.S. - Not Sold Separately
N.I. - Not Illustrated
% - Part Stock Recommendation

TE15

GROUP-TRANSMISSION CASE



Date : 18-SEP-13
Revised :
MODEL : 4507387

TE15
GROUP-TRANSMISSION CASE

<u>Item</u>	<u>Qty</u>	<u>Part Number</u>	<u>%</u>	<u>Description</u>
1	1	4219596	E	ASSY-TRANSM CASE - INCL.ITEMS 2 THRU 12
2	1	4219565	E	ASSY-TRANSM TUBE - PART OF ITEM 1
3	1	76K218	B	O RING - PART OF ITEM 1
4	1	4212113		PLATE-SUCTION TUBE RETAINING-PART OF ITEM 1
5	2	4C516		CAPSCREW - PART OF ITEM 1
6	1	4212033		CLIP-SUCTION LINE TUBE - PART OF ITEM 1
7	4	249894		RIVET - PART OF ITEM 1
8	1	4212114		RIVET - PART OF ITEM 1
9	1	230900	D	TUBE-LOW CLUTCH PRESSURE - PART OF ITEM 1
10	2	222067	E	SLEEVE-PRESS & LUBR TUBE - PART OF ITEM 1
11	1	247884	D	OIL BAFFLE - PART OF ITEM 1
12	1	247885	D	OIL BAFFLE - PART OF ITEM 1
13	2	214118		PIN-TRANS CASE TO REAR COVER DOWEL
14	1	232260	D	OIL BAFFLE
15	3	76K211	B	O RING CLUTCH PRESSURE TUBE
16	1	215757		PLUG-MAGNETIC DRAI
17	3	40K4		PLUG-OIL LEVEL & LOCKUP PORT
18	2	10F16		PLUG
19A	1	219370		PLUG
19				Not Used On This Model
20	1	219373	B	GASKET-SUCTION SCREEN
21	1	12F12		PLUG-4TH LUBE
22	1	4212047	C	ASSY-SPEED SENSOR 15 MM-INCL.ITEMS 23 THRU 25
23	1	4209809	B	O RING-SPEED SENSOR-PART OF ITEM 22 AND 26
24	1	4209786		SUPPORT-SPEED SENSOR - PART OF ITEM 22 AND 26

N.S.S. - Not Sold Separately
N.I. - Not Illustrated
% - Part Stock Recommendation

Date : 18-SEP-13
Revised :
MODEL : 4507387

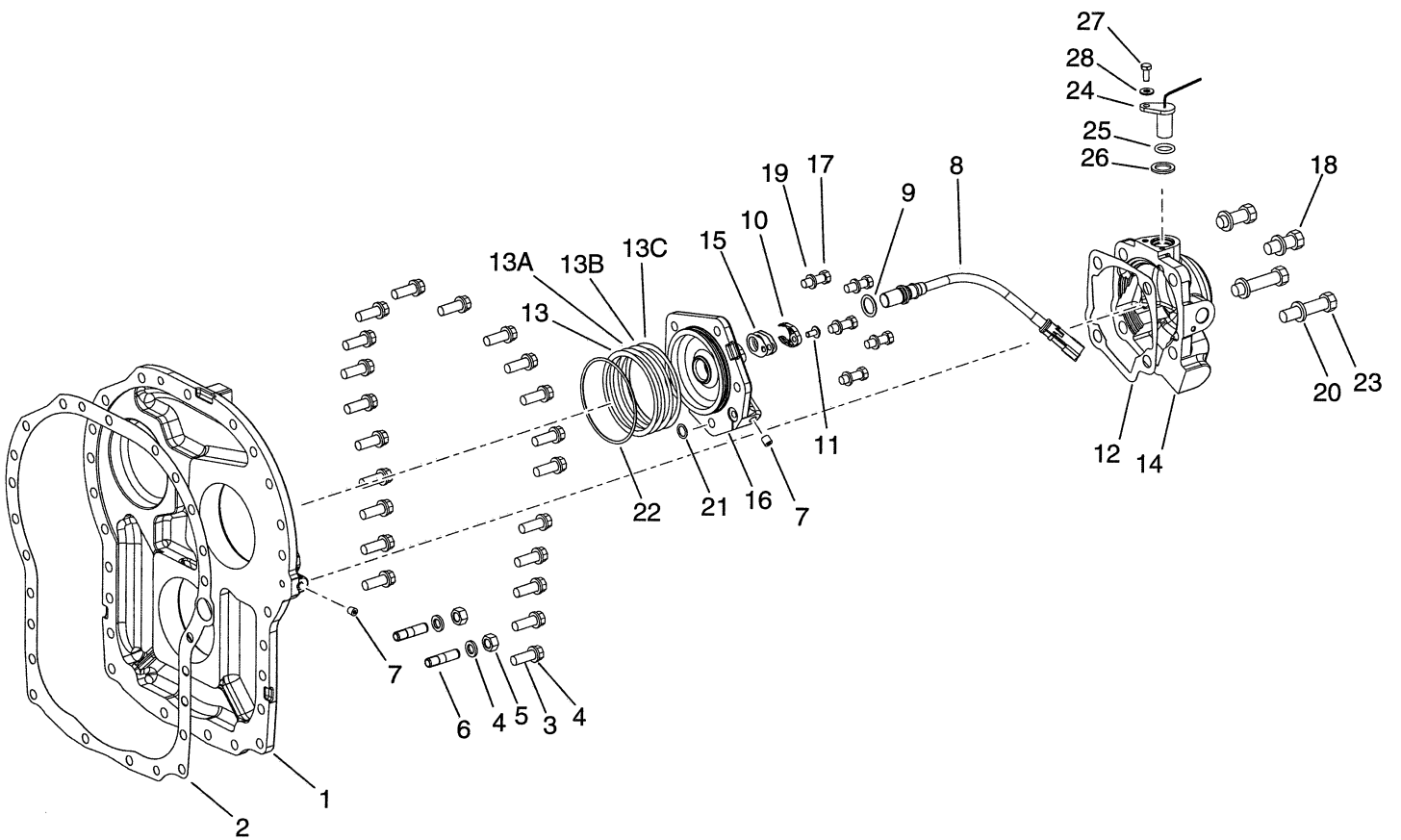
TE15
GROUP-TRANSMISSION CASE

<u>Item</u>	<u>Qty</u>	<u>Part Number</u>	<u>%</u>	<u>Description</u>	
25	1	4209804		CAPSCREW-SPEED SENSOR-PART OF ITEM 22 AND 26	
26	1	4212049	C	ASSY-SPEED SENSOR 26 MM-INCL.ITEMS 22 THRU 25	
27	1	19F24		BUSHING-REDUCING PIPE	
28	1	4211988	E	SENSOR-TEMPERATURE	
	1	16F2		PIPE PLUG	N.I.

N.S.S. - Not Sold Separately
N.I. - Not Illustrated
% - Part Stock Recommendation

TE15

GROUP-REAR COVER



Date : 10-FEB-14
Revised :
MODEL : 4505076

TE15
GROUP-REAR COVER

<u>Item</u>	<u>Qty</u>	<u>Part Number</u>	<u>Description</u>
1	1	251425	COVER-REAR
2	1	242408	GASKET-REAR COVER TO TRANSMISSION CASE
3	21	17C720	CAPSCREW
4	23	4E7	LOCKWASHER
5	2	64D7	NUT
6	2	200991	STUD
7	2	239244	PLUG
8	1	4212049	ASSY-SPEED SENSOR - INCLUDING ITEMS 9,10 & 11
9	1	4209809	O RING-SPEED SENSOR - PART OF ITEM 8
10	1	4209786	SUPPORT-SPEED SENSOR - PART OF ITEM 8
11	1	4209804	CAPSRCEW-SPEEDSENSOR - PART OF ITEM 8
12	1	241573	GASKET-BEARING CAP
13	AR	251442	SHIM-BEARING CAP .004
13A	AR	251443	SHIM-BEARING CAP .007
13B	AR	251444	SHIM-BEARING CAP .010
13C	AR	251445	SHIM-BEARING CAP .020
14	1	251477	CAP-BEARING IDLER SHAFT
15			Not Used On This Model
16	1	251434	CAP-LOW SHAFT BEARING
17	5	1C618	CAPSCREW
18	2	1C924	CAPSCREW
19	5	4E6	LOCKWASHER
20	4	4E9	LOCKWASHER
21	1	76K112	O RING
22	1	76K241	O RING

N.S.S. - Not Sold Separately
N.I. - Not Illustrated

Date : 10-FEB-14
Revised :
MODEL : 4505076

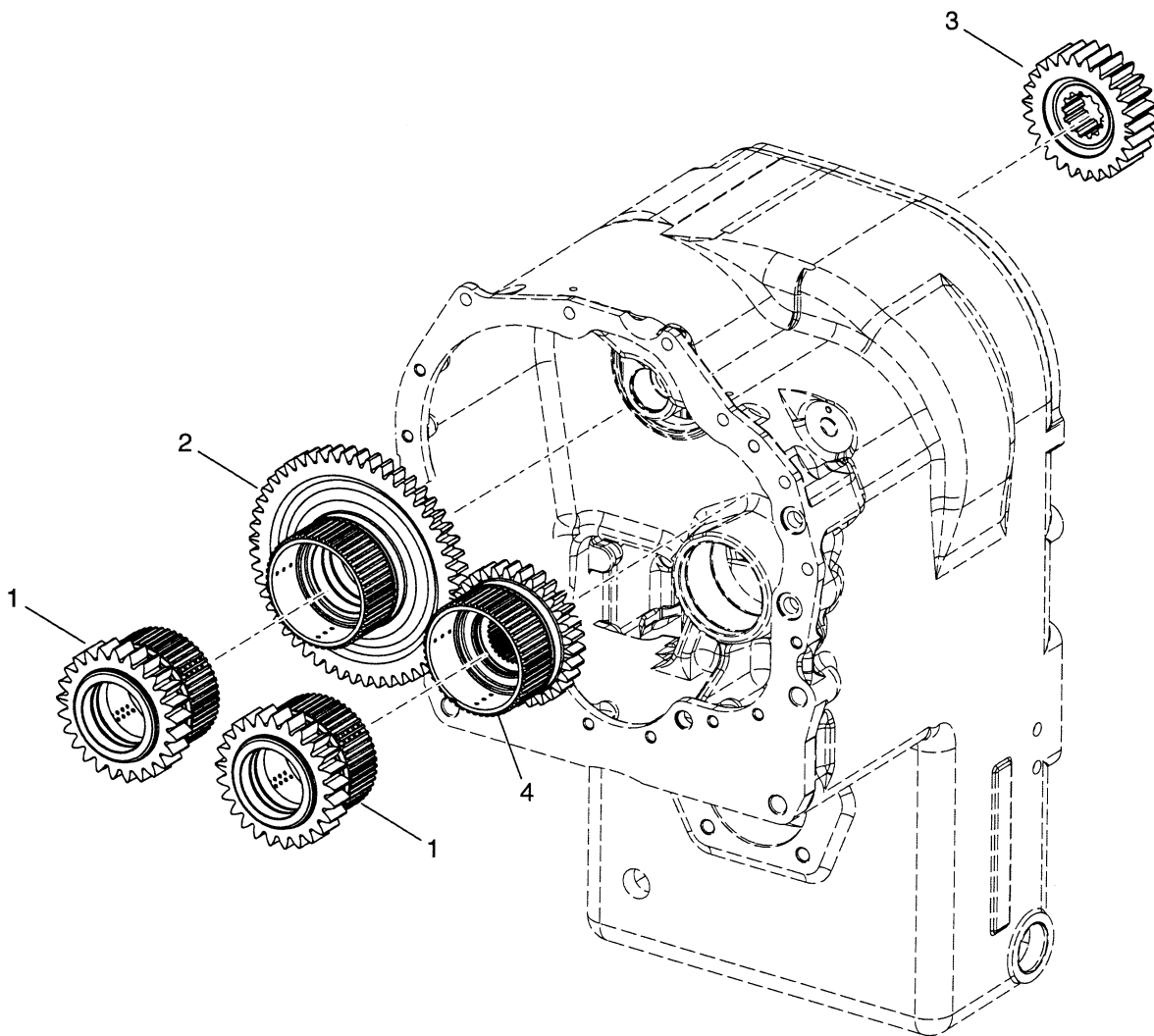
TE15
GROUP-REAR COVER

<u>Item</u>	<u>Qty</u>	<u>Part Number</u>	<u>Description</u>
23	2	1C940	CAPSCREW
24	1	47K7	PLUG-SPEED SENSOR PORT-INCLUDE ITEM 26 Plug in place of sensor-speed
25			Not Used On This Model
26	1	91F7	O-RING - PART OF ITEM 24
27			Not Used On This Model
28			Not Used On This Model

N.S.S. - Not Sold Separately
N.I. - Not Illustrated

TE15

GROUP-FWD AND REV SHAFT



Date : 01-FEB-13
Revised :
MODEL : 4504938

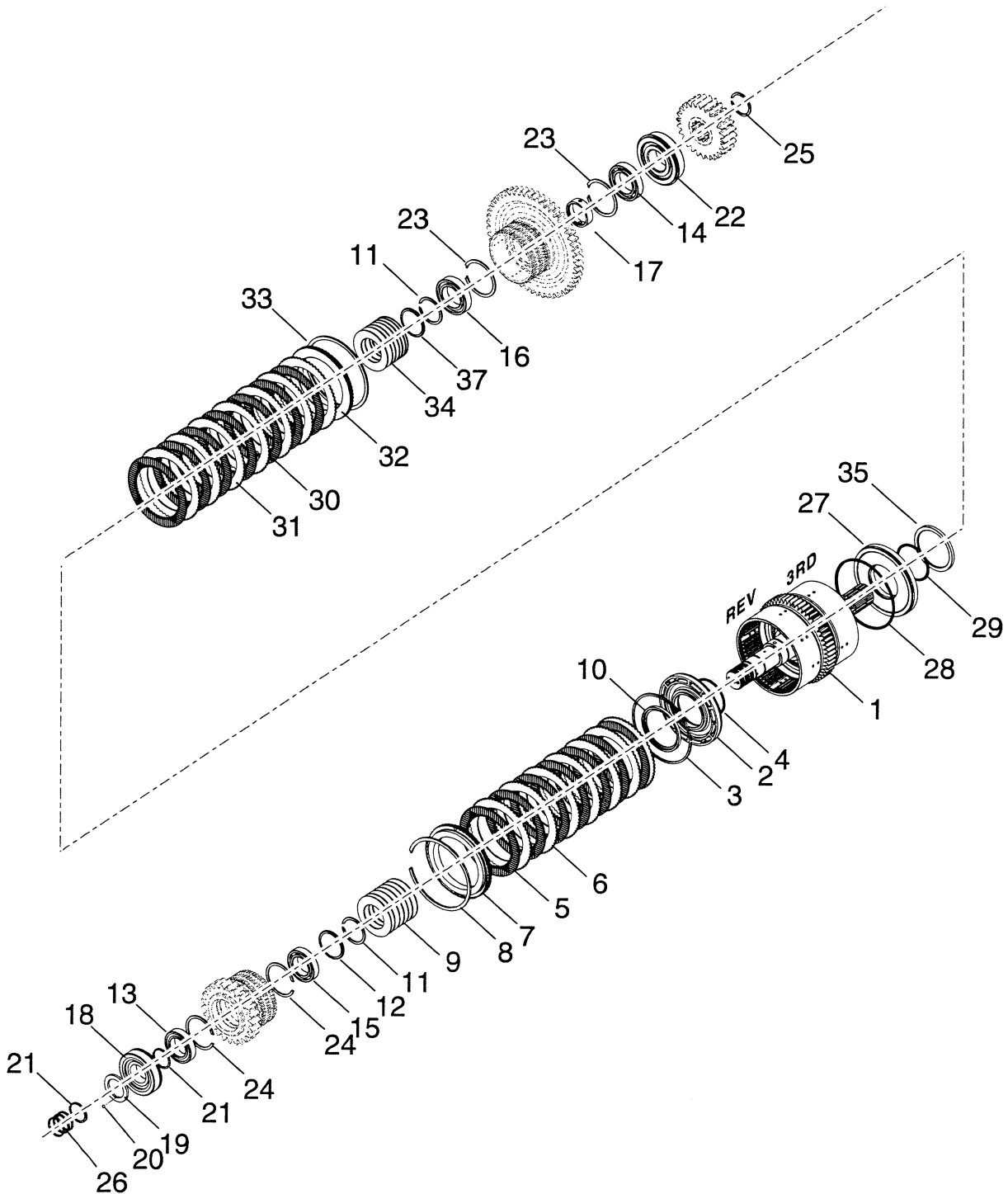
RTE15822-14
GROUP-GEAR

<u>Item</u>	<u>Qty</u>	<u>Part Number</u>	<u>%</u>	<u>Description</u>	
1	2	4212116	D	GEAR-CLUTCH HUB	25T
2	1	4212117	D	HIGH-RANGE GEAR & CLUTCH HUB	52T
3	1	4211884	E	GEAR-DRIVE LOW & 4TH	26T
4	1	4212523		GEAR-CLUTCH HUB	30T

N.S.S. - Not Sold Separately
N.I. - Not Illustrated
% - Part Stock Recommendation

TE15

GROUP-REV AND 3RD CLUTCH SHAFT



Date : 01-FEB-13

Revised :

MODEL : 4505014

TE15

GROUP-REV AND 3RD SHAFT CLUTCH

<u>Item</u>	<u>Qty</u>	<u>Part Number</u>	<u>%</u>	<u>Description</u>
1	1	4211872	E	ASSY-REV & 3RD SHAFT, DRUMS & PLUGS
2	1	4212125	C	ASSY-CLUTCH PISTON-REV CL-INCL. ITEMS 3 & 4
3	1	4217120	B	SEAL-OUTER CLUTCH PISTON - PART OF ITEM 2
4	1	4212128	B	SEAL-INNER PISTON - PART OF ITEM 2
5	7	4213141	C	DISC-CLUTCH INNER - REV
6	7	4212130		DISC CLUTCH OUTER - REV
7	1	236810	D	PLATE-CLUTCH END REV
8	1	215190	C	SNAP RING REV
9	1	4212964	D	ASSY-DISC SPRING -INCLUDING 7 SPRING DISCS
10	1	4212132		SPACER-PISTON
11	2	224026	D	SNAP-RING SPRING RETAINING
12	1	251432	D	RETAINER-SNAP RING
13	1	233389	C	BEARING-BALL 6008Z/C3
14	1	233390	C	BRG-HIGH GEAR 109KSF 6009Z/C3
15	1	230829	C	BEARING-CLUTCH DRIVEN GEAR 6008/C3
16	1	230860	C	BEARING-HIGH GEAR 6009/C3
17	1	230906	E	SPACER-HI GEAR BRG
18	1	239946	C	BEARING-CLUTCH SHAFT MS-1308-FGEX
19	1	239947		PLATE-REV & HIGH SHAFT FRONT BRG END
20	1	10J4		BALL-REV & HIGH SHAFT FRONT BRG END PLATE RET
21	2	247949	D	RING-FRONT BEARING RETAINING
22	1	239948	C	BRG-REV & HIGH SHAFT REAR U-1309-J
23	2	223874	C	HIGH GEAR BEARING SNAP RING
24	2	223877	D	SNAP RING-CLUTCH DRIVEN GEAR BEARING
25	1	224106	C	RING-GEAR RETAINING

N.S.S. - Not Sold Separately

N.I. - Not Illustrated

% - Part Stock Recommendation

Date : 01-FEB-13
Revised :
MODEL : 4505014

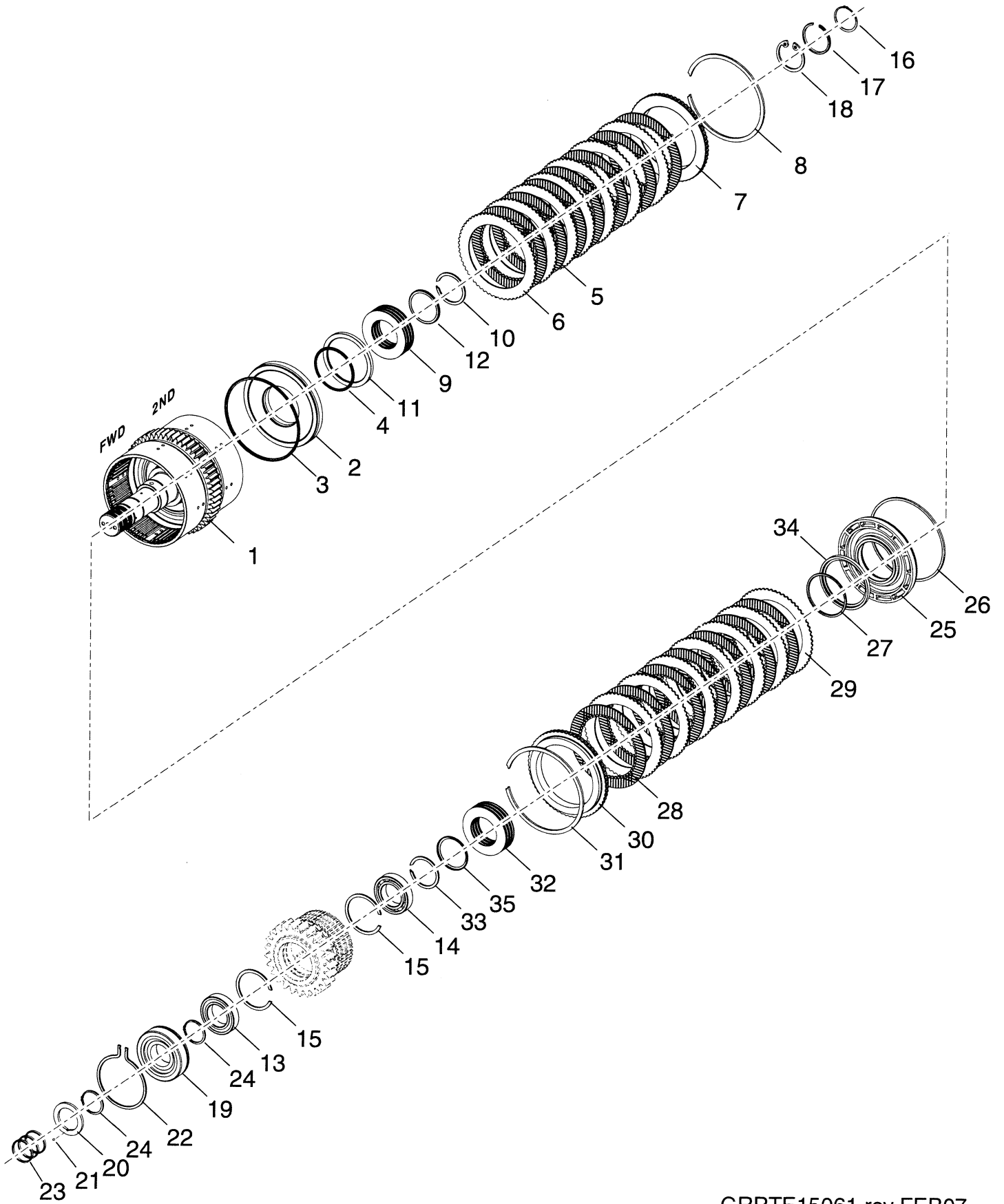
TE15
GROUP-REV AND 3RD SHAFT CLUTCH

<u>Item</u>	<u>Qty</u>	<u>Part Number</u>	<u>%</u>	<u>Description</u>
26	3	4208098	B	PISTON-RING
27	1	4212125	C	ASSY-CLUTCH PISTON-3RD CL-INCL. ITEMS 28 & 29
28	1	4212127	B	SEAL-OUTER CLUTCH PISTON - PART OF ITEM 27
29	1	4212128	B	SEAL-INNER PISTON - PART OF ITEM 27
30	7	4213141	C	DISC-CLUTCH INNER - 3RD
31	7	4212130		DISC CLUTCH OUTER - 3RD
32	1	236810	D	PLATE-CLUTCH END 3RD
33	2	215190	C	SNAP RING 3RD
34	1	4212964	D	ASSY-DISC SPRING - INCLUDING 7 SPRING DISCS
35	1	4212132		SPACER-PISTON
37	1	251432	D	RETAINER-SNAP RING

N.S.S. - Not Sold Separately
N.I. - Not Illustrated
% - Part Stock Recommendation

TE15

GROUP-FWD AND 2ND CLUTCH SHAFT



Date : 01-FEB-13

Revised :

MODEL : 4504969

TE15

GROUP-FWD AND 2ND SHAFT CLUTCH

<u>Item</u>	<u>Qty</u>	<u>Part Number</u>	<u>%</u>	<u>Description</u>
1	1	4211912	E	ASSY-FWD & 2ND SHAFT, DRUMS AND PLUGS
2	1	4212125	C	ASSY-CLUTCH PISTON-2ND CLUTCH-INCL.ITEM 3 & 4
3	1	4217120	B	SEAL-OUTER CLUTCH PISTON - PART OF ITEM 2
4	1	4212128	B	SEAL-INNER PISTON - PART OF ITEM 2
5	7	4213141	C	DISC-CLUTCH INNER
6	7	4212130		DISC CLUTCH OUTER
7	1	236810	D	PLATE-CLUTCH DISC BACKING 2ND CLUTCH
8	1	215190	C	SNAP RING-BACKING PLATE - 2ND CLUTCH
9	1	4212964	D	ASSY-DISC SPRING - INCLUDING 7 SPRING DISCS
10	2	224026	D	SNAP-RING SPRING RETAINING
11	1	4212132		SPACER-PISTON - 2ND CLUTCH
12	1	251432	D	RETAINER-SNAP RING - 2ND CLUTCH
13	1	233389	C	BRG-CLUTCH DRIVEN GEAR 108KSF L.I.F.
14	1	230829	C	BRG-CLUTCH DRIVEN GEAR 108KS L.I.F.
15	2	223877	D	SNAP RING-CLUTCH DRIVEN GEAR BEARING
16				Not Used On This Model
17				Not Used On This Model
18				Not Used On This Model
19	1	239946	C	BEARING-FWD & 2ND SHAFT FRONT LP-1308-U-128
20	1	239947		PLATE-FWD & 2ND SHAFT FRONT BRG END
21	1	10J4		BALL-FWD & 2ND SHAFT FRONT BRG END PLATE RET
22	1	230889	D	RING-FR BRG LCTG
23	3	4208098	B	PISTON-RING
24	2	247949	D	RING-FRONT BEARING RETAINING
25	1	4212125	C	ASSY-CLUTCH PISTON-FWD CL-INCL.ITEM 26 & 27

N.S.S. - Not Sold Separately

N.I. - Not Illustrated

% - Part Stock Recommendation

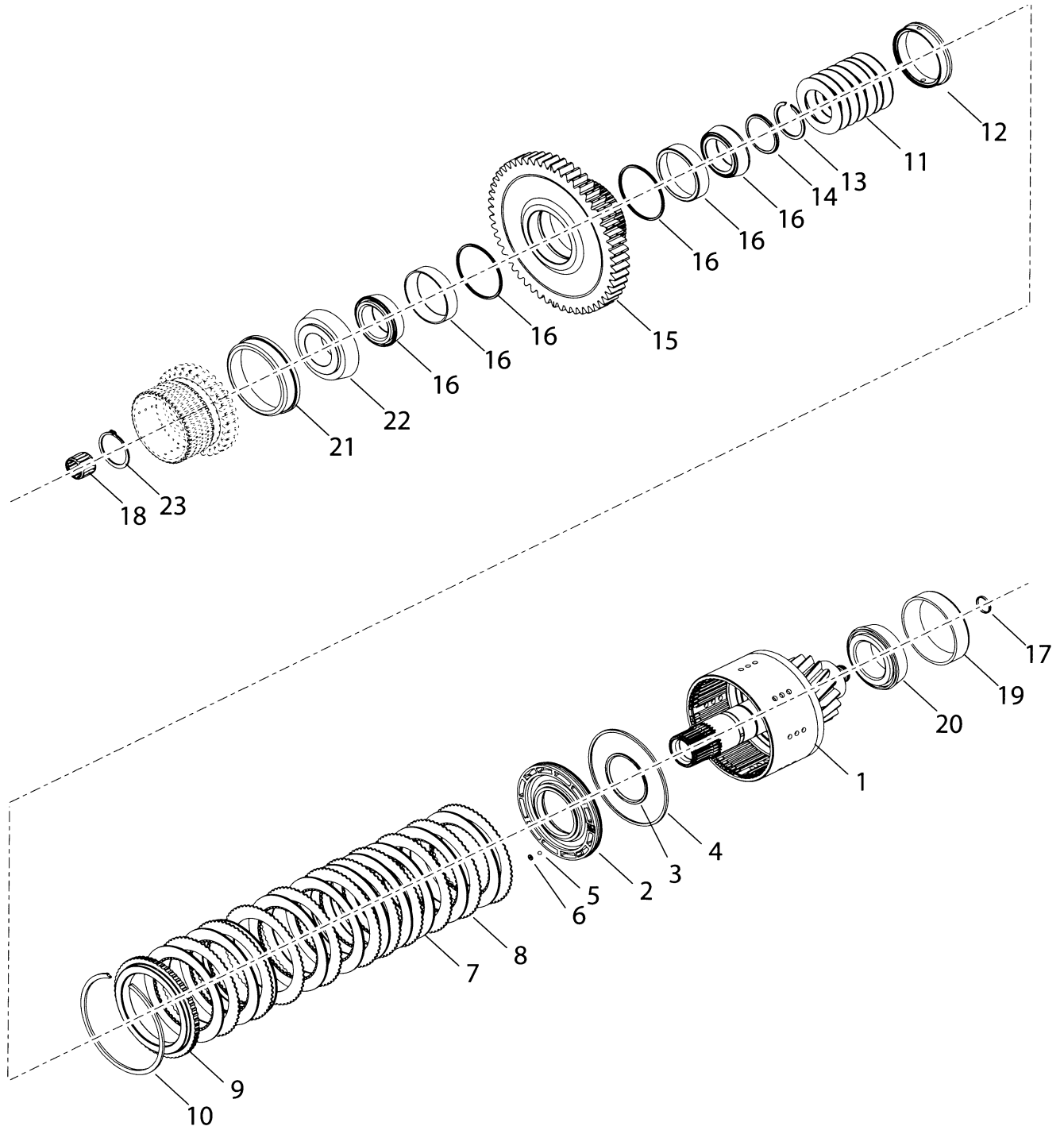
Date : 01-FEB-13
Revised :
MODEL : 4504969

TE15
GROUP-FWD AND 2ND SHAFT CLUTCH

<u>Item</u>	<u>Qty</u>	<u>Part Number</u>	<u>%</u>	<u>Description</u>
26	1	4212127	B	SEAL-OUTER CLUTCH PISTON - PART OF ITEM 25
27	1	4212128	B	SEAL-INNER PISTON - PART OF ITEM 25
28	7	4213141	C	DISC-CLUTCH INNER
29	7	4212130		DISC CLUTCH OUTER
30	1	236810	D	PLATE-CLUTCH DISC BACKING FWD CLUTCH
31	1	215190	C	SNAP RING-BACKING PLATE - FWD CLUTCH
32	1	4212964	D	ASSY-DISC SPRING - INCLUDING 7 SPRING DISCS
34	2	4212132		SPACER-PISTON - FWD CLUTCH
35	2	251432	D	RETAINER-SNAP RING - FWD CLUTCH

N.S.S. - Not Sold Separately
N.I. - Not Illustrated
% - Part Stock Recommendation

TE15 GROUP-LOW SHAFT



Date : 01-FEB-13

Revised :

MODEL : 4504789

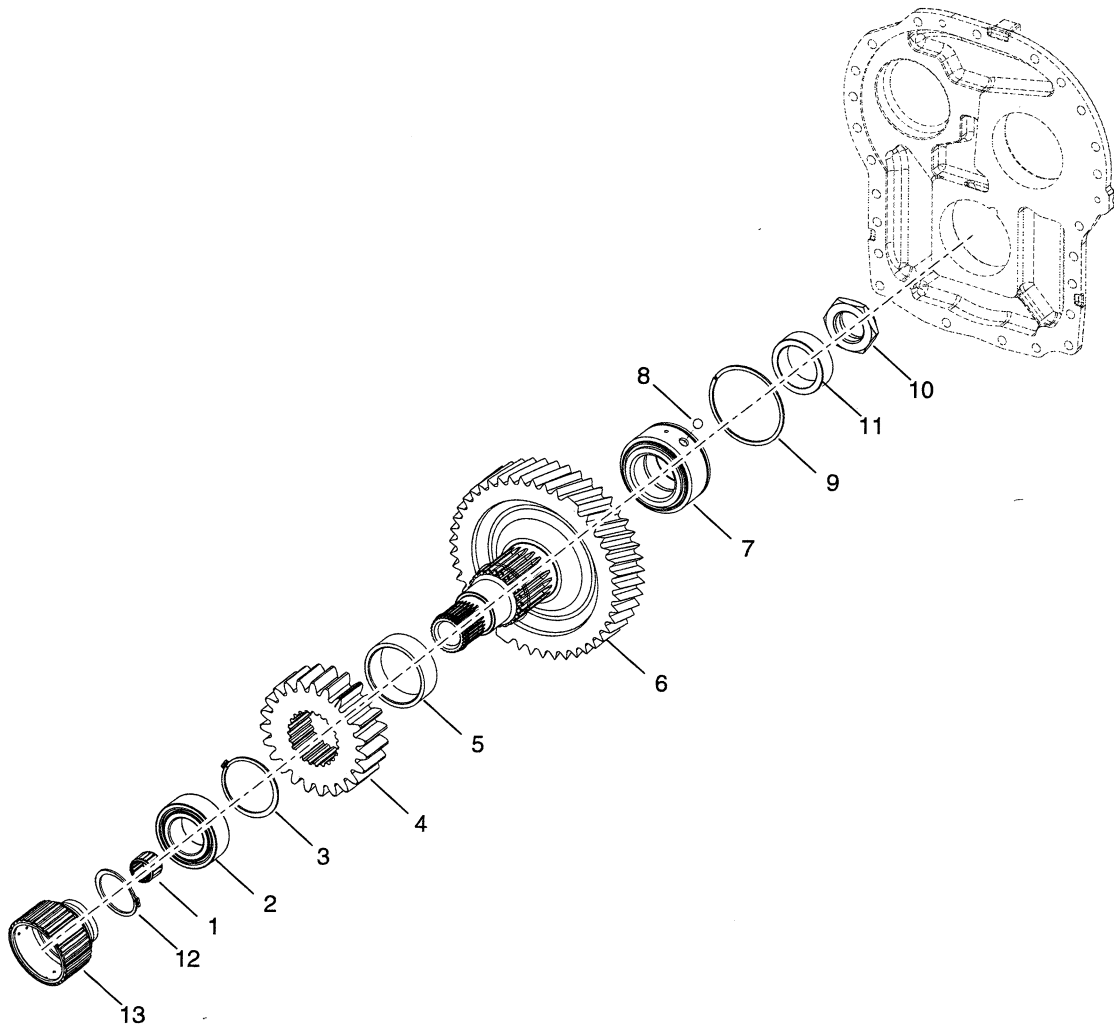
RTE15822-14
GROUP-LOW SHAFT

<u>Item</u>	<u>Qty</u>	<u>Part Number</u>	<u>%</u>	<u>Description</u>
1	1	4212521	E	ASSEMBLY-LOW SHAFT, HUB, DRUM & PLUG
2	1	4213000	E	ASSY-CL PISTON,SEAT&BALL-INCL.ITEMS 3 THRU 6
3	1	4212128	B	SEAL-CLUTCH PISTON INNER - PART OF ITEM 2
4	1	4217120	B	SEAL-CLUTCH PISTON OUTER- PART OF ITEM 2
5	1	10J6		BALL - PART OF ITEM 2
6	1	246571		SEAT-BALL - PART OF ITEM 2
7	10	4213141	C	DISC-CLUTCH INNER
8	10	224772	C	DISC-CLUTCH OUTER
9	1	236810	D	PLATE-CLUTCH DISC BACKING
10	1	215190	C	RING-BACKING PLATE RET 6 1/8 O.D. EXP 1/8
11	1	4212964	D	ASSY-DISC SPRING Includes 7 spring discs
12	1	4212032		SPACER-PISTON
13	1	224026	D	SNAP RING
14	1	251432	D	RETAINER-SPRING RETAINING RING
15	1	4213211	E	GEAR & LOW CLUTCH HUB 54T
16	1	251435	C	ASSY-LOW SPEED GEAR BEARING
17	1	250215	B	RING-CLUTCH SHAFT PISTON MELDIN
18	1	230886	C	BEARING-LOW SPEED CL SHAFT PILOT WJ-162116
19	1	243259	C	BEARING-LOW SPEED SHAFT REAR 453X
20	1	243257	C	BEARING-LOW SPEED SHAFT REAR 462
21	1	251428	C	CUP-BEARING FRONT TAPER 39552B
22	1	251429	C	CONE-BEARING FRONT TAPER 39573
23	1	237669	D	RETAINING RING

N.S.S. - Not Sold Separately
N.I. - Not Illustrated
% - Part Stock Recommendation

TE15

GROUP-IDLER SHAFT



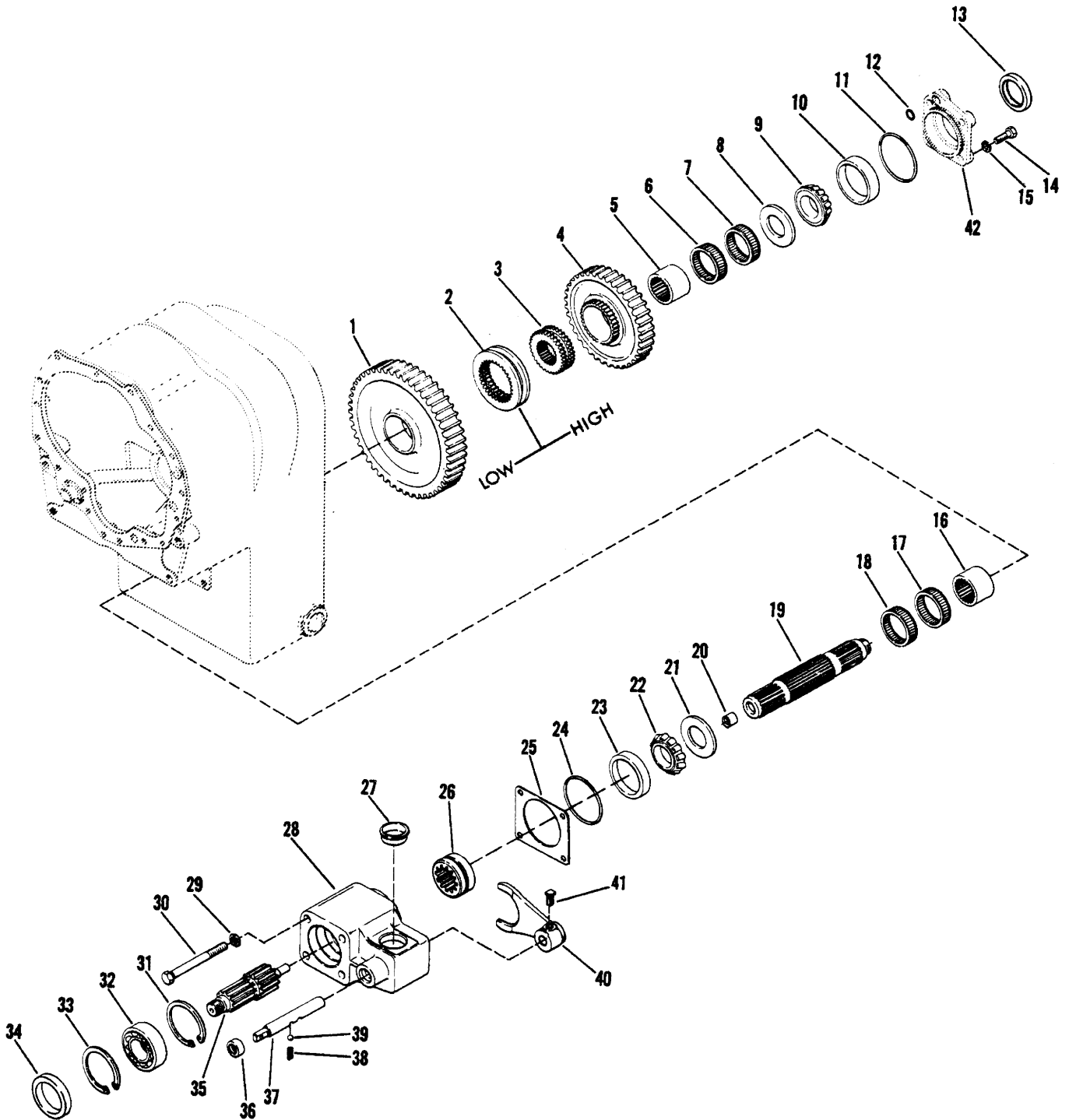
Date : 01-FEB-13
Revised :
MODEL : 4503981

TE15
GROUP-IDLER SHAFT

<u>Item</u>	<u>Qty</u>	<u>Part Number</u>	<u>%</u>	<u>Description</u>
1	1	230886	C	BEARING-IDLER SHAFT PILOT WJ162116
2	1	241539	C	BEARING-IDLER SHAFT FRONT U5210-B
3	1	247469	D	RING-IDLER SHAFT GEAR RETAINING 247543
4	1	241538	D	GEAR-IDLER SHAFT LOW RANGE 23T
5	1	241674		SPACER-GEAR
6	1	248216	E	SHAFT & GEAR IDLER 45T
7	1	239922	C	ASSEMBLY-IDLER SHAFT BEARING
8	1	10J15		BALL-REAR BEARING LOCK
9	1	230952	C	RING-REAR BEARING LOCATING
10	1	231639	C	NUT-IDLER SHAFT 1 3/4-12
11	1	251480	E	GEAR-DRIVE SPEEDOMETER
12	1	234350	D	RING-RETAINING
13	1	241536	E	HUB-4TH SPEED CLUTCH

N.S.S. - Not Sold Separately
N.I. - Not Illustrated
% - Part Stock Recommendation

GROUP-OUTPUT SHAFT WITH REAR DISCONNECT



GRP32084

Date : 01-FEB-13
Revised :
MODEL : 4505083

TE15
GROUP-OUTPUT SHAFT

<u>Item</u>	<u>Qty</u>	<u>Part Number</u>	<u>%</u>	<u>Description</u>
1	1	241541	D	GEAR-LOW RANGE 48T
2	1	231874	D	HUB-SHIFT
3	1	231871	D	SLEEVE-SHIFT HUB
4	1	241563	D	OUTPUT SHAFT GEAR 38T
5	1	231870	C	INNER RACE
6	1	227303	C	GAGED ROLLER ASSY
7	1	227303	C	GAGED ROLLER ASSY
8	1	231880	E	WASHER-GEAR THRUST
9	1	243257	C	TAPER ROLLER BEARING CONE
10	1	243259	C	TAPER ROLLER BEARING CUP
11	1	25K40412	B	O RING
12	1	25K30026	B	O RING
13	1	231884	B	OIL SEAL
14	4	1C928		CAPSCREW
15	4	4E9		LOCKWASHER
16	1	231870	C	INNER RACE
17	1	227303	C	GAGED ROLLER ASSY
18	1	227303	C	GAGED ROLLER ASSY
19	1	248174	D	ASSY-OUTPUT SHAFT & BUSHING-INCL.ITEM 20
20	1	248173		OUTPUT SHAFT BUSHING - PART OF ITEM 19
21	1	231880	E	WASHER-GEAR THRUST
22	1	247349	C	CONE-BEARING
23	1	244864	C	CUP-BEARING
24	1	25K40400	B	O RING
25	AR	231848	D	SHIM DISCONNECT BEARING CAP (.004)

N.S.S. - Not Sold Separately
N.I. - Not Illustrated
% - Part Stock Recommendation

Date : 01-FEB-13
Revised :
MODEL : 4505083

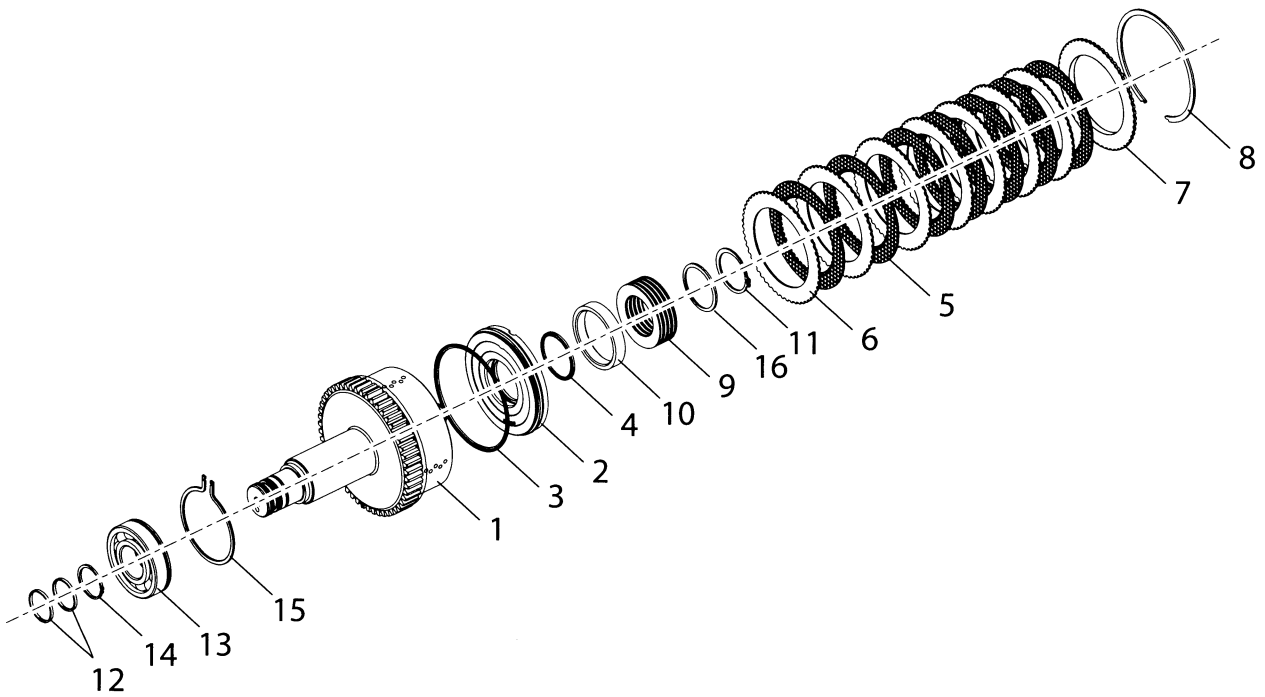
TE15
GROUP-OUTPUT SHAFT

<u>Item</u>	<u>Qty</u>	<u>Part Number</u>	<u>%</u>	<u>Description</u>
25A	AR	231849	D	OUTPUT SHAFT BRG. CAP SHIM
25B	AR	231850	D	OUTPUT SHAFT BRG. CAP SHIM
25C	AR	231851	D	OUTPUT SHAFT BRG. CAP SHIM
26	1	231820	D	HUB-SHIFT
27	1	222418	E	PLUG
28	1	231865	E	HOUSING-DISCONNECT
29	4	4E9		LOCKWASHER
30	4	17C9100		CAPSCREW
31	1	223854	C	SNAP RING
32	1	214596	C	BEARING (BALL)
33	1	223854	C	SNAP RING
34	1	232066	B	OIL SEAL 2.750 SHAFT 4.33100
35	1	231866	D	SHAFT-DISCONNECT
36	1	239892	B	OIL SEAL-DISCONNECT
37	1	231822	D	RAIL-SHIFT
38	1	201413	E	DETENT SPRING
39	1	10J14	E	BALL
40	1	231821	E	FORK-DISCONNECT SHIFT
41	1	201566		LOCKSCREW-SHIFT FORK
42	1	231878	D	CAP-OUTPUT SHAFT REAR BEARING

N.S.S. - Not Sold Separately
N.I. - Not Illustrated
% - Part Stock Recommendation

TE15

GROUP-4TH CLUTCH SHAFT



Date : 01-FEB-13
Revised : A
MODEL : 4505043

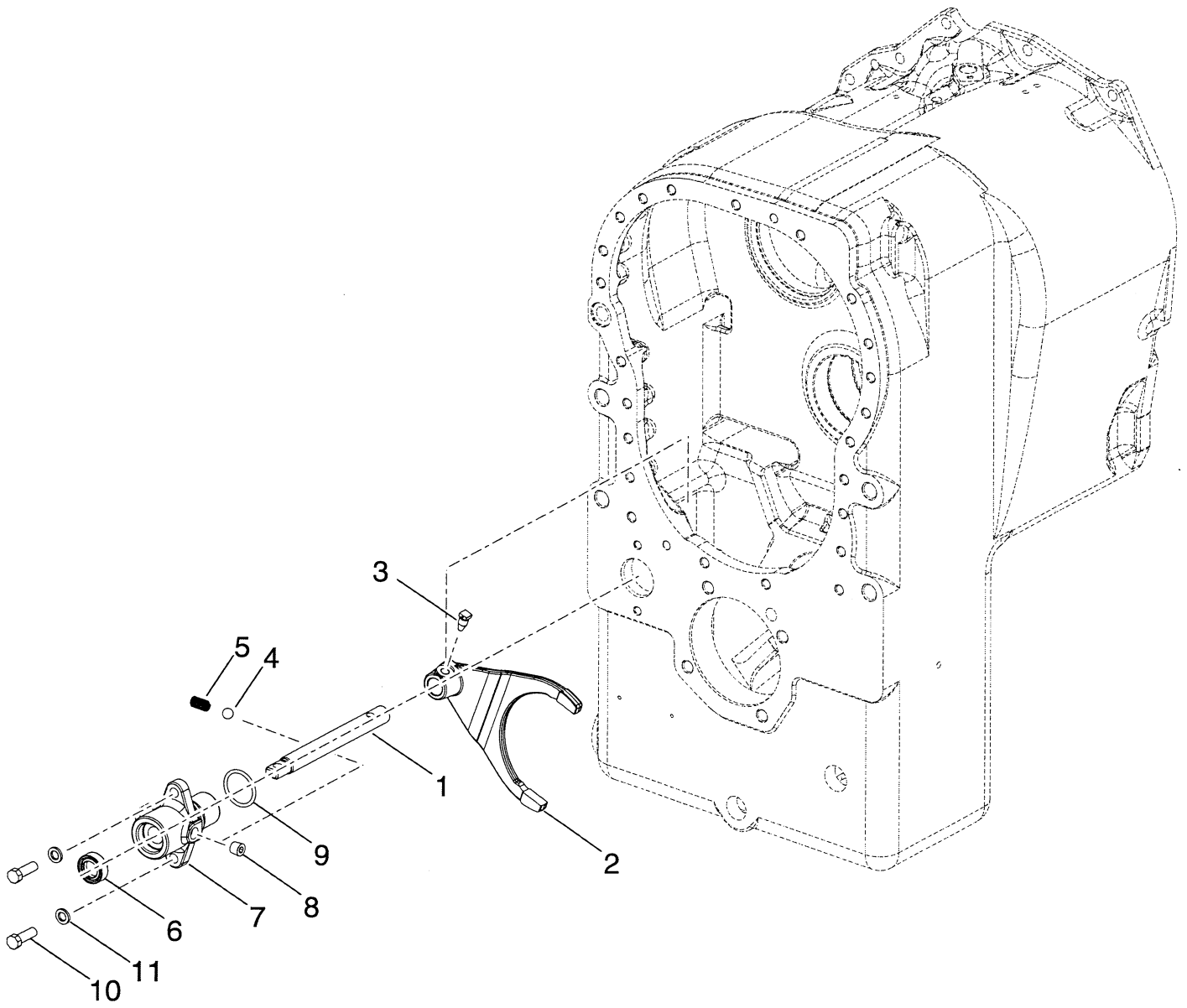
RTE15822-14
GROUP-4TH SHAFT CLUTCH

<u>Item</u>	<u>Qty</u>	<u>Part Number</u>	<u>%</u>	<u>Description</u>
1	1	4212467	E	ASSY-4TH SHAFT, DRUM AND PLUG
2	1	4212920	E	ASSY-CLUTCH PISTON - INCL.ITEMS 3 & 4
3	1	237032	B	SEAL-CLUTCH PISTON - OUTER - PART OF ITEM 2
4	1	234113	B	SEAL-CLUTCH PISTON - INNER - PART OF ITEM 2
5	7	4211960	C	DISC-INNER
6	7	4207620	C	DISC-OUTER
7	1	4204253	C	PLATE-CLUTCH DISC BACKING
8	1	234111	C	SNAP RING-BACKING PLATE
9	1	4211141	D	ASSY-DISC SPRING - INCLUDES 9 SPRING DISCS
10	1	4212921		PISTON-SPACER
11	1	224026	D	SNAP RING
12	2	4208098	B	PISTON-RING
13	1	241606	C	BALL-BEARING
14	1	247949	D	RING-FRONT BRG RET DWG 247545
15	1	230889	D	SNAP RING-FRONT BEARING
16	1	251432	D	RETAINER-SNAPRING

N.S.S. - Not Sold Separately
N.I. - Not Illustrated
% - Part Stock Recommendation

TE15

GROUP-HIGH & LOW RANGE SHIFT CONTROL



Date : 01-FEB-13
Revised :
MODEL : 232017

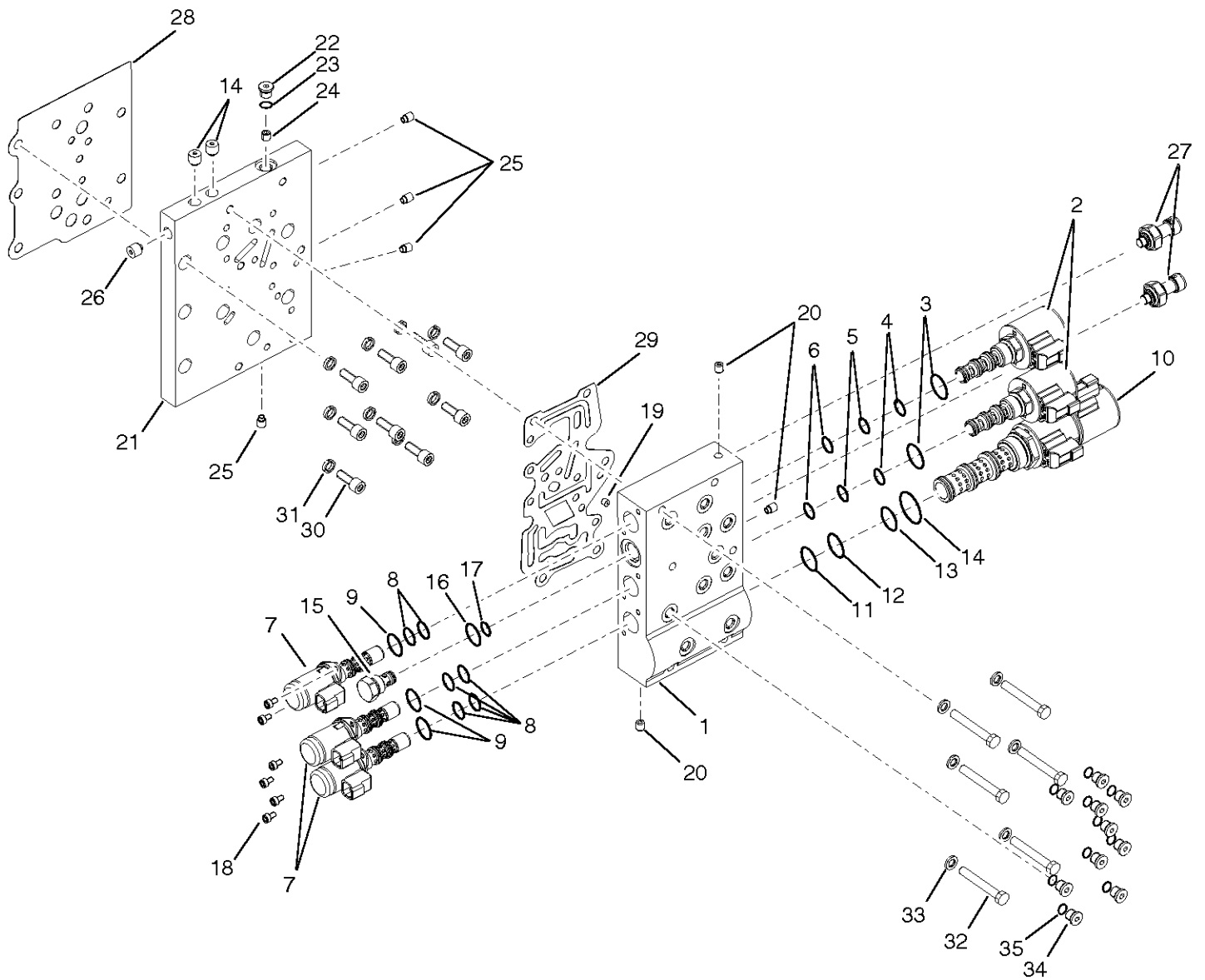
28000
GROUP-HI & LOW RANGE SHIFT CONTROL

<u>Item</u>	<u>Qty</u>	<u>Part Number</u>	<u>%</u>	<u>Description</u>
1	1	231876	D	SHIFT RAIL RANGE SHIFT
2	1	231875	E	FORK SHIFT
3	1	201566		LOCKSCREW-SHIFT FORK
4	1	10J14	E	BALL
5	1	201413	E	DETENT SPRING
6	1	239892	B	OIL SEAL-DISCONNECT
7	1	231877	E	HOUSING-DISCONNECT SHIFT
8	1	239245		PLUG
9	1	25K40112	B	O RING
10	2	1C618	C	CAPSCREW
11	2	4E6		LOCKWASHER

N.S.S. - Not Sold Separately
N.I. - Not Illustrated
% - Part Stock Recommendation

TE15

GROUP-ELECTRIC CONTROL VALVE



Date : 01-FEB-13

Revised :

MODEL : 4504678

TE15

GROUP-ELECTR CONTR 4SPEED 24V

<u>Item</u>	<u>Qty</u>	<u>Part Number</u>	<u>%</u>	<u>Description</u>
1A	1	4212865	E	ASSY-CONTROL VALVE AND SENSOR VALVE PRESSURE Order 4212865 if you need the assembly-control valve 4212151 together with sensor valve pressure 4212000 (item 27)
1	1	4212151	E	ASSY-CONTROL VALVE-INCL ITEMS 2 THRU 20
2	2	4212221	D	ASSY-SOLENOID-PART OF ITEM 1 including items 3,4,5 and 6 (o-rings) + coil 24V - pnr 4212224 qty 1
3	2	76K116	B	O-RING - PART OF ITEM 2
4	2	76K16	B	O-RING - PART OF ITEM 2
5	2	76K15	B	O RING - PART OF ITEM 2
6	2	76K14	B	O RING - PART OF ITEM 2
7	3	4216197	D	SOLENOID-VALVE - PART OF ITEM 1 including items 8 and 9 (o-rings)
8	3	4210661	B	O-RING - PART OF ITEM 7
8A	3	4210662	B	O-RING
9	3	4210711	B	O-RING - PART OF ITEM 7
10	1	4212228	D	ASSY-SOLENOID 24V - PART OF ITEM 1 including items 11,12,13 and 14 (o-rings) coil 24V - pnr 4212224 qty 2
11	1	76K117	B	O RING - PART OF ITEM 10
12	1	76K118	B	O RING - PART OF ITEM 10
13	1	76K119	B	O-RING - PART OF ITEM 10
14	1	76K217	B	O RING - PART OF ITEM 10
15	1	4212230	D	ASSY-SOLENOID PLUG - PART OF ITEM 1 including items 16 and 17 (o-rings)
16	1	76K114	B	O RING - PART OF ITEM 15
17	1	76K12	B	O RING - PART OF ITEM 15
18	6	4212220		SCREW - PART OF ITEM 1

N.S.S. - Not Sold Separately

N.I. - Not Illustrated

% - Part Stock Recommendation

Date : 01-FEB-13
Revised :
MODEL : 4504678

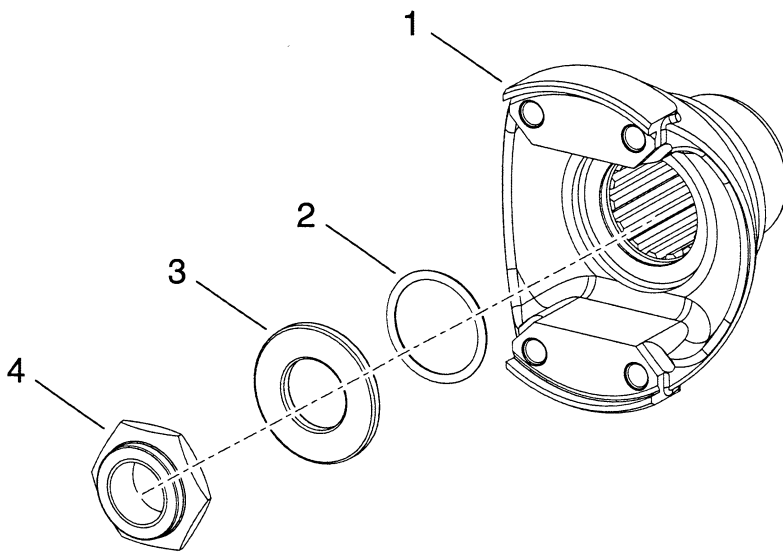
TE15
GROUP-ELECTR CONTR 4SPEED 24V

<u>Item</u>	<u>Qty</u>	<u>Part Number</u>	<u>%</u>	<u>Description</u>	
19	1	N.S.S.		PLUG-ORIFICE - PART OF ITEM 1	
20	3	N.S.S.		PLUG-EXPANSION - PART OF ITEM 1	
21	1	4212152	E	ASSY-VALVE ADAPTOR - INCL.ITEMS 22 THRU 26	
22	1	4212217		PLUG-O RING - PART OF ITEM 21	
23	1	76K12	B	O RING - PART OF ITEM 22	
24	1	4212218		PLUG-ORIFICE - PART OF ITEM 21	
25	4	N.S.S.		PLUG-EXPANSION - PART OF ITEM 21	
26	3	N.S.S.		PLUG-EXPANSION - PART OF ITEM 21	
27	2	4212000	D	SENSOR-VALVE PRESSURE - PART OF ITEM 1A	
28	1	4212154	B	GASKET-ADAPTOR ASSY TO CONV HSG	
29	1	4211504	B	GASKET-CONTROL VALVE	
30	9	73G614		CAPSCREW	
31	9	22E6		LOCKWASHER	
32	6	1C536		CAPSCREW	
33	6	4E5	E	LOCKWASHER	
34	10	4208860		PLUG M10X1 - INCL.ITEM 35 - PART OF ITEM 1	
35	10	91F3	B	O RING - PART OF ITEM 34	
	1	4213207		VALVE-PROTECTION COVER	N.I.

N.S.S. - Not Sold Separately
N.I. - Not Illustrated
% - Part Stock Recommendation

TE15

GROUP-FLANGE



Date : 01-FEB-13
Revised :
MODEL : 235521

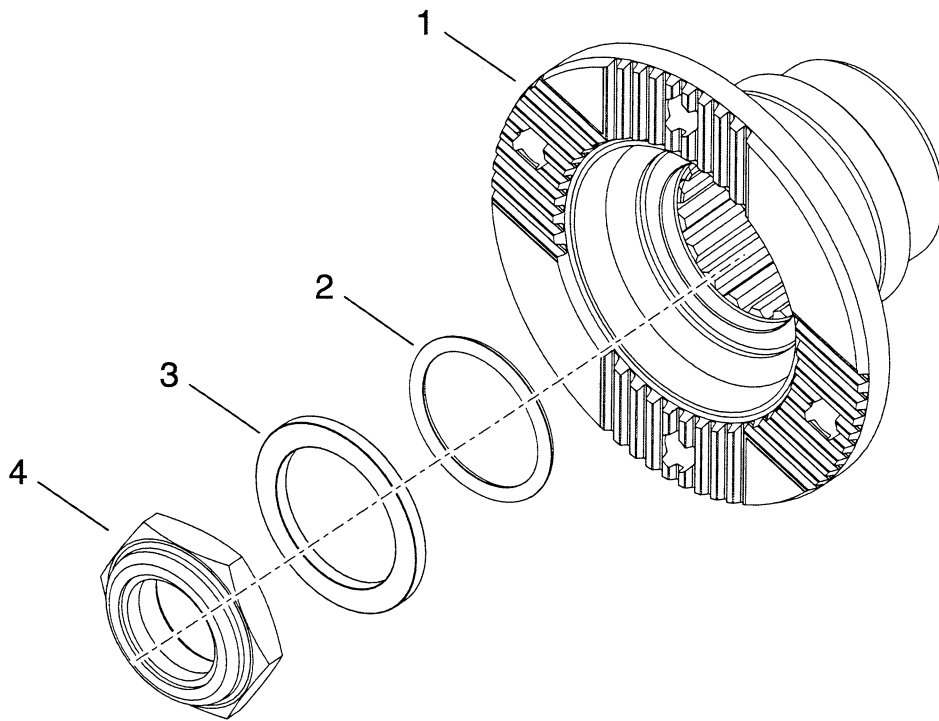
28000
GROUP-FLANGE 5-C 15T

<u>Item</u>	<u>Qty</u>	<u>Part Number</u>	<u>%</u>	<u>Description</u>	
1	1	231553	E	FLANGE	5C
2	1	76K220	B	O RING	
3	1	102745		WASHER-FLANGE	
4	1	216058	C	LOCK NUT	

N.S.S. - Not Sold Separately
N.I. - Not Illustrated
% - Part Stock Recommendation

TE15

GROUP-FLANGE



Date : 01-FEB-13
Revised :
MODEL : 269926

32000
GROUP-FLANGE 155KV70 (17T)

<u>Item</u>	<u>Qty</u>	<u>Part Number</u>	<u>%</u>	<u>Description</u>
1	1	251723	E	FLANGE-COMPANION 155KV(17T)
2	1	76K328	B	O RING
3	1	231916	D	WASHER
4	1	215634	C	NUT-IDLER SHAFT

N.S.S. - Not Sold Separately
N.I. - Not Illustrated
% - Part Stock Recommendation

Model: TE15

KIT - GASKET AND SEALING FOR TE15 R-MODEL

QTY SHOWN IS TO MAKE ONE OF THE NEXT HIGHER ASSEMBLY

REV	P	PART NUMBER	QTY	S/E	PARTNAME AND APPLICATION
		231798	1		SEAL-OUTPUT SHAFT FRONT OIL
		25K30012	2		O RING
		232346	1		PISTON RING RACE
		219373	2		GASKET
		76K218	1		O RING
		76K211	2		O RING
		219373	1		GASKET
		4209809	1		O RING-SPEED SENSOR DIA 15 X 1,8
		242408	1		GASKET-REAR COVER TO TRANSMISSION CASE
		4212127	1		SEAL-OUTER CLUTCH PISTON
		4212128	1		SEAL-INNER PISTON
		4208098	3		PISTON-RING
		4212127	1		SEAL-OUTER CLUTCH PISTON
		4212128	1		SEAL-INNER PISTON
		4212127	1		SEAL-OUTER CLUTCH PISTON
		4212128	1		SEAL-INNER PISTON
		4208098	3		PISTON-RING
		4212127	1		SEAL-OUTER CLUTCH PISTON
		4212128	1		SEAL-INNER PISTON
		4212127	1		SEAL-OUTER CLUTCH PISTON
		4212128	1		SEAL-INNER PISTON
		76K241	1		O RING
		76K112	1		O RING
		4209809	1		O RING-SPEED SENSOR DIA 15 X 1,8
		241573	1		GASKET-BEARING CAP
		25K40412	1		O RING
		231884	1		OIL SEAL

Ltr :
Date:
ECN :

Issued : sv

Rel : sv
Date: 16-FEB-06
ERN : 06418100B1

Model: TE15

KIT - GASKET AND SEALING FOR TE15 R-MODEL

QTY SHOWN IS TO MAKE ONE OF THE NEXT HIGHER ASSEMBLY

REV	P	PART NUMBER	QTY	S/E	PARTNAME AND APPLICATION
		25K30026	1		SEAL-O RING
		25K40400	1		O RING
		232066	1		OIL SEAL 2.750 SHAFT 4.33100
		239892	1		OIL SEAL-DISCONNECT
		237032	1		SEAL-CLUTCH PISTON - OUTER
		234113	1		SEAL-CLUTCH PISTON - INNER
		4208098	2		PISTON-RING
		239892	1		OIL SEAL-DISCONNECT
		25K40112	1		O RING
		76K116	2		O-RING
		76K16	2		O-RING
		76K15	2		O RING
		76K14	2		O RING
		76K15	3		O RING
		76K20	3		O RING
		76K117	1		O RING
		76K118	1		O RING
		76K119	1		O-RING
		76K217	1		O RING
		76K114	1		O RING
		76K12	1		O RING
		76K12	1		O RING
		4212154	1		GASKET-ADAPTOR ASSY TO CONV HSG
		4211504	1		GASKET-CONTROL VALVE
		91F3	10		O RING

Ltr :
Date:
ECN :

Issued : sv

Rel : sv
Date: 16-FEB-06
ERN : 06418100B1



Part Stocking Recommendation

The table below is a minimum spare parts inventory recommendation designated by letter code in each Service Parts List. Each letter code indicates a percentage for determining stock quantities to support the field population. Any quantity less than 1 or partial quantities need not be stocked.

Letter Code	Percentage	Example
A	15%	Part quantity = 10 per unit Field Population = 240 units Recommended stock = 240 units x 10 per unit x .15 = 360 parts
B	10%	Part quantity = 4 per unit Field Population = 66 units Recommended stock = 66 units x 4 per unit x .10 = 26.4 or 26 parts
C	6%	Part quantity = 2 per unit Field Population = 203 units Recommended stock = 203 units x 2 per unit x .06 = 24.4 or 24 parts
D	4%	Part quantity = AR* Field Population = 42 units Recommended stock = 42 units x 3 per unit x .04 = 5.04 or 5 parts
E	2%	Part quantity = 1 per unit Field Population = 75 units Recommended stock = 75 units x 1 per unit x .02 = 1.5 or 1 part
*Part quantities denoted by "AR" (as required) should be ordered by a quantity of 3 per unit.		

© Copyright 2014 Dana Holding Corporation
All content is subject to copyright by Dana and may not be reproduced in whole or in part by any means, electronic or otherwise, without prior written approval.
THIS INFORMATION IS NOT INTENDED FOR SALE OR RESALE, AND THIS NOTICE MUST REMAIN ON ALL COPIES.

For product inquiries or support,
visit www.dana.com or call 419-887-6445
For other service publications,
visit www.SpicerParts.com/literature.asp
For online service parts ordering,
visit www.SpicerParts.com/order.asp



SPICER®

Off-Highway Products